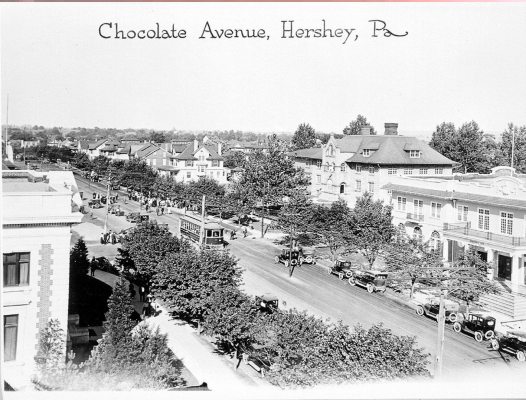


Chocolate Avenue, Hershey, Pa



# Threefold Hershey

The Sweetest Model for Social  
Threfolding on Earth

*Business is a matter of human service*

--Milton S. Hershey



Whitsun Conference  
Saturday, 3<sup>rd</sup> June, 9:30am  
to dusk & Sun., 4<sup>th</sup> June 2023

Stonehaven Farms (Founded 1737)  
Hershey, PA ~ Chocolatetown, USA



How can the art of social threefolding heal the divisive chaos plaguing civilization? What is the Whitsun Spirit of the universally human and how does it lead to the harmony of Michaelic cosmopolitanism? How did a grass roots movement in Hershey defy the odds to defeat Wall Street greed and secure *the sweetest model for social threefolding on earth*? How does the Knights Templar economic impulse of “gifted capital” benefit disadvantaged youth and cultural life in Threefold Hershey today?

**Albert Steffen Group (Pittsburgh), Arimathea Group (Richmond), and Corps de Michael (Hershey) cordially invite you to join us in *The Sweetest Place on Earth* for a weekend of social renewal in the Spirit of Whitsun.** The Group and Branch Festival Conference will feature a keynote address, 'Threefold Hershey', excursion to the Highpoint Mansion of Milton and Catherine Hershey, Vignette of John Moses—A Pioneer Advocate of Social Threefolding in America (with Jonathan Swan), conversation, group and branch reports, community circle, Flames of Whitsun Bonfire, and a Class Lesson of the School of Spiritual Science.

The keynote remarks, 'Threefold Hershey' (with David Lenker) will examine seven year cycles in the biography of American social reformer and industrial philanthropist, Milton S. Hershey—also known as *The Chocolate King*. Born a humble farm boy (just up the road from our conference venue), how did Milton S. Hershey metamorphose Philadelphia and New York City business failures into a caramel company success, chocolate empire, and threefold model towns in Pennsylvania and Cuba? How and when did the Templar / Rosicrucian impulse inspire *The Chocolate King* to gift his fortune and controlling chocolate corporate

stock to trusts for disadvantaged American youth and cultural initiatives in Hershey?

In November 1909, ten years prior to Rudolf Steiner's seminal work on social renewal, *The Threefold Commonwealth*, Milton and Catherine Hershey executed the 'Deed of Trust'. By this instrument and capital gift, a portion of current and future chocolate profits were earmarked for housing, feeding, clothing, and educating disadvantaged youth from all fifty USA states in the 'Sweetness of Nature'. By 1918, the residential school campus approached 12,000 acres of farmland in Hershey, Pennsylvania; while additional stock gifts by Milton S. Hershey granted controlling shares of the Hershey Chocolate Corporation to the School Trust.

In the living laboratory of 'Threefold Hershey' we discern an intentional relationship of the three spheres of the social organism delineated in the *Threefold Commonwealth*: economic (chocolate factory), state/rights/political (new model town), and cultural (free independent school). Additionally, we will consider the role of intuitive thinking in social threefolding and how 'Threefold Hershey' and the *Threefold Commonwealth* stand with respect to socialism, democratic socialism, capitalism, and Marxism.

Just prior to 'Threefold Hershey' we caravan past Founders Hall (second largest rotunda in the world) en route to Highpoint Mansion. There we can experience an outer confirmation or "open secret" of the working of the ***Templar Impulse that is important for all the succeeding centuries of modern times.*** (Rudolf Steiner, *The Knights Templars*, Dornach, 2<sup>nd</sup> October 1916) In the model town where Templar economics thrives today we behold Templar themed murals installed by Milton S. Hershey over a century ago!



*Nota bene:* admission is charged at Highpoint Mansion. Please book tickets for the June 3rd tour at 11am online and in advance at the Hershey Story website. **Tickets will not be available at the Mansion.** Tickets for June 3<sup>rd</sup> will be released at the below link beginning May 15<sup>th</sup> 2023. **If joining the Highpoint Tour, plan to arrive at Stonehaven at 9:30am. If not joining the tour, please plan to arrive at Stonehaven by 12:45pm for 'Threefold Hershey'.** <https://tickets.mshersheyfoundation.org>

Although there is no conference fee, donations will be accepted to defray conference and festival expenses. Space is limited for 'Threefold Hershey', 'Vignette of Threefold Pioneer John Moses', and Cello with Virginia Ramsey. **To reserve a seat for indoor events, please RSVP to: [thecorpsdemichael@yahoo.com](mailto:thecorpsdemichael@yahoo.com) or call: 717.964.3376**

*Venue: the historic Widow Logan House at Stonehaven Farms, Hershey was erected by the descendants of Thomas Logan, a veteran of the American Revolution. Logan founded Stonehaven Farms in 1737 as an original grant from the Holy Experiment of William Penn. The original sheepskin deed is housed in the Archives Tower of the Pennsylvania Historical and Museum Commission adjacent to the Capitol at Harrisburg. A digital image is on display in Renaissance Hall. Thomas Logan is interred at the Derry Church Graveyard adjacent to Highpoint Mansion, Hershey.*

*Nous avons hâte de vous voir à l'Endroit le plus Doux sur Terre.*



Albert Steffen Group, Arimathea Group, and Corps de Michael look forward to seeing you in the *Sweetest Place on Earth*.





## Suggested Readings / Videos

Suggested Reading and Video clips: ***Milton S. Hershey and his Legacy of Model Towns, Milton Hershey School, and Hershey Chocolate Company.*** Silent film footage from 1915 shows World's largest chocolate factory, Chocolate and Cocoa Avenues, Early years of Milton Hershey School, School owned farmland, and Hershey Park. Note students working on farm and in wood shop building a chair. 'The Secret to Achieve a Dream' video shows scenes from Milton Hershey School today. (Pic: Milton & Catherine Hershey, Nice, France—circa 1909)

<https://www.mhskids.org/about/history/milton-s-hershey/>

Suggested Audio Lectures: ***The Social Future*** by Rudolf Steiner (especially lectures 1,4,5, and 2

<http://www.rudolfsteineraudio.com/thesocialfuture1919/thesocialfuture1919.html>

Suggested Reading: ***The Knights Templar***, Gil McHattie, Editor (Forest Row, UK: Temple Lodge, 2011), References to Milton and Catherine Hershey in "Templar Courage Comes of Age", pp 138-157

Suggested Reading: ***The Threefold Commonwealth*** by Rudolf Steiner

<https://www.gutenberg.org/files/59257/59257-h/59257-h.htm>

Alternate translation: ***The Threefold Social Order*** by Rudolf Steiner

[https://rsarchive.org/Books/GA023/English/AP1972/GA023\\_index.html](https://rsarchive.org/Books/GA023/English/AP1972/GA023_index.html)

Suggested Brief Reading: **History of Highpoint Mansion**

<https://hersheystory.org/tour-high-point-mansion/history-of-high-point-mansion/>

Suggested Single Lecture: ***The Knights Templars*** by Rudolf Steiner (Dornach, 2<sup>nd</sup> October, 1916)

<https://corpsdemichael.org/Conferences.html>

Scroll to eighth link and click "Knights Templars and Gettysburg suggested reading: "The Knights Templars"

Suggested Reading: ***Hershey: Milton S. Hershey's Extraordinary Life of Wealth, Empire, and Utopian Dreams*** by Michael D'Antonio (New York: Simon and Schuster, 2006)

Pics: Chocolate Avenue, Founders Hall (Milton Hershey School), Widow Logan House (Stonehaven Farms), Seal of the Knights Templars, Super Moon Rises Over the St. John's Meadow (Stonehaven Farms)